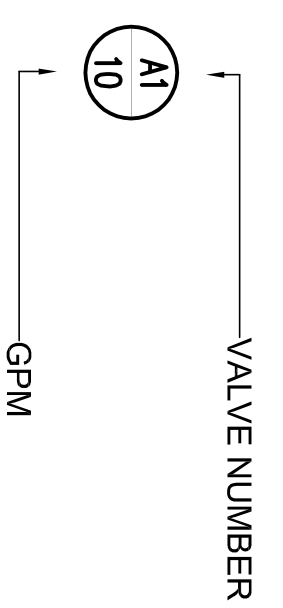


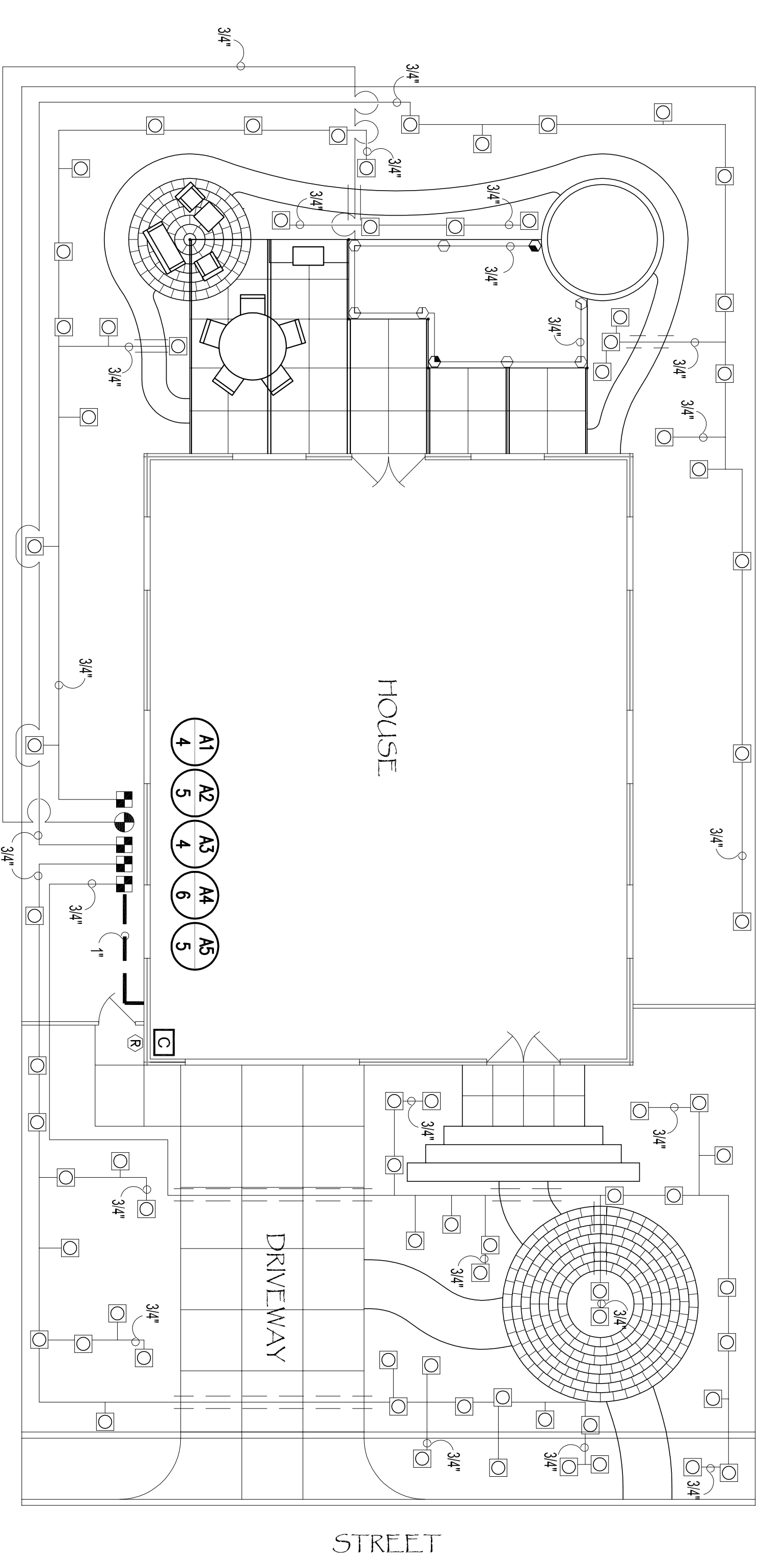
IRRIGATION MATERIAL LEGEND

SYMBOL	MANUFACT.	MODEL NO. / DESCRIPTION	GPM	PSI	RADIUS
☐	RAIN BRD	XERHBRD 8 MULTI-OUTLET EMISSION DEVICE. MODEL XBD-80. USING XERH-BUG EMITTER. MODEL XR-20 (2 GPH PER OUTLET). TWO PER SHRUB AND FOUR PER TREE. INSTALL EMISSION DEVICE WITHIN SEB-6X EMITTER BOX. WITH DT-025 DISTRIBUTION TUBING (6 FT. MAX LENGTH). TS-025 STAKE (ONE PER TUBE/EMITTER). AND ONE DBC-025 BUG CAP PER EMITTER/DISTRIBUTION TUBE	2.0-16.0 GPH	20	N/A
⊖	RAIN BRD	1806-SAM-PRS POP-UP TURF HEAD W/ RAIN BRD 8-Q/T/H/F NOZZLES	.21, .27, .41, .82	25	7 FT
⊖	RAIN BRD	1806-SAM-PRS POP-UP TURF HEAD W/ RAIN BRD 12-Q/T/H/F NOZZLES	.60, .80, 1.20, 2.40	25	11 FT
☐	RAIN BRD	LFV100 (1") LOW FLOW VALVE. INSTALL RAIN BRD PRB-QCHK-100-200M (1") PRESSURE REGULATING, QUICK-CHECK BASKET FILTER ON THE DOWNSTREAM SIDE OF EACH DRIP REMOTE CONTROL VALVE.			
☐	RAIN BRD	100-DV/F (1") REMOTE CONTROL VALVE. WITH AG. PRODUCTS 4E 200 MESH WYE FILTER. (1" SIZE FOR SYSTEMS LESS THAN 18 GPM, 11/2" SIZE FOR ZONES LARGER THAN 18 GPM) AND A SENNINGER PWR-30-4MF 1" PRESSURE REGULATOR FOR SYSTEMS LESS THAN 15 GPM. USE PR-40HF 1/4" REGULATOR FOR SYSTEMS LARGER THAN 15 GPM.			
☐	TORO	TIS-06-ID TORO INTELLISENSE 6 STATION CONTROLLER. MOUNT INSIDE GARAGE ON EXTERIOR WALL.			
Ⓜ	TORO	TWRS TORO WIRELESS RAIN SENSOR. MOUNT ON GUTTER.			
—	AS APPROVED	PVC PIPE 3/4" CL. 200 AS LATERAL LINES 12" BELOW GRADE			
—	AS APPROVED	PVC PIPE SCH 40 AS MAINLINE. CONNECT TO HOUSE WATER SUPPLY DOWNSTREAM OF BACKFLOW PREVENTER AND METER 24" BELOW GRADE			
—	AS APPROVED	PVC PIPE SCH. 40 AS SLEEVING. TWICE THE DIAMETER OF PIPE OR WIRE BUNDLE CARRIED PLAGE BELOW ALL PAVING, HARDSCAPE, ETC.			
—	AS APPROVED	IRRIGATION CONTROL WIRE #14UF AWG DIRECT BURIAL (U.L. APPROVED)			
—	3M	DBY DIRECT BURIAL WATER-PROOF WIRE CONNECTORS FOR USE ON ALL WIRE CONNECTIONS			
—	K.B.I.	KSC-XXX-S SWING CHECK VALVE. LINE SIZE: 1 DOWNSTREAM OF EACH RCV WHEN RCV IS LOWER THAN THE SPRINKLERS			
—	K.B.I.	KC-XXX-S SPRING CHECK VALVE. LINE SIZE: 1 DOWNSTREAM OF EACH RCV IMMEDIATELY ABOVE FIRST LATERAL LINE TEE. WHEN RCV IS HIGHER THAN THE SPRINKLERS			



NOTES:

- ALL IRRIGATION SHOULD BE INSTALLED PER THE MANUFACTURERS INSTRUCTIONS. THE SE ARE AVAILABLE ON THE MANUFACTURERS WEBSITES AND AT IRRIGATION SPECIALTY STORES.
- IRRIGATION EQUIPMENT IS BEST PURCHASED FROM AN IRRIGATION SPECIALTY STORE. SUCH AS HYDROSCAPE. TO ENSURE THAT YOU GET THE RIGHT EQUIPMENT AND THE PROPER QUANTITY TO BRING YOUR PLAN INTO THE STORE.
- YOUR WATER DISTRICT MAY HAVE REBATES AVAILABLE FOR WATER-WISE IRRIGATION EQUIPMENT. CHECK THEIR WEBSITE REGULARLY FOR UPDATES.



CHILD FRIENDLY LANDSCAPE
TYPICAL WATER SMART RESIDENTIAL PLAN
IRRIGATION PLAN

