

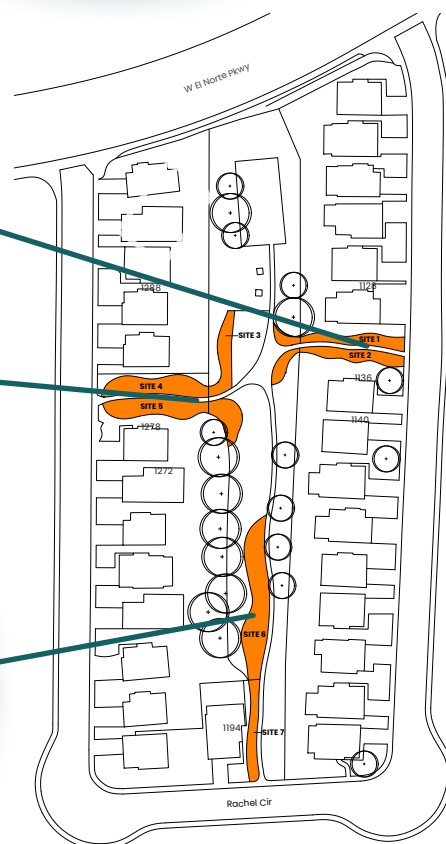
El Norte Park HOA

Escondido, CA 92026

El Norte Park converted 10,000 square feet of grass in their common area park to sustainable landscaping to help reduce water use and long-term costs for the community's homeowners. The new landscape includes California native plants to support local wildlife and a rock-lined swale that helps slow and retain stormwater as well as add visual interest to park visitors.



PRE-PROJECT PHOTO



Orange areas converted from grass to sustainable landscaping.

PROJECT OUTPUTS



Area treated:
10,000 sqft



Native plant* area installed:
4,487 sqft

PROJECT OUTCOMES



Irrigation runoff*
reduced:
45,000 gal/yr



Water saved:
450,000 gal/yr
Enough water saved to serve
1-2 San Diego households per year



Estimated participant
cost savings:
\$28,000
over ten years

***Native plant benefits:** Native plants help support working ecosystems in California. They attract butterflies, birds, and other pollinators, require little or no artificial irrigation when established, and help reduce or eliminate pesticide use.

Irrigation runoff reduction: Irrigation runoff from landscapes carries pollutants like oil, paint, pesticides, fertilizers, and pet waste into the storm drain system, and is not treated before entering local waterways.

NATIVE PLANT PROFILE



The *Heteromeles Arbutifolia* (common name: Toyon) is a native large shrub. White, fragrant flowers appear in late spring or early summer, followed by clusters of red winter berries. It attracts hummingbirds and butterflies and is great for erosion control.

“

I have experience with a similar project from about ten years ago. We as a board had to fill out all the forms, take all the before and after photos, submit the paperwork, and hope we didn't miss anything to get our rebates. It was much simpler and easier using the Landscape Optimization Service

— **FRED JOHNSON**
Board Member

”



UPGRADE YOUR LANDSCAPE TODAY!

The [Landscape Optimization Service](#) can help your unincorporated HOA or commercial property transform large grass areas into sustainable, low water use landscapes with technical assistance from start to finish.