

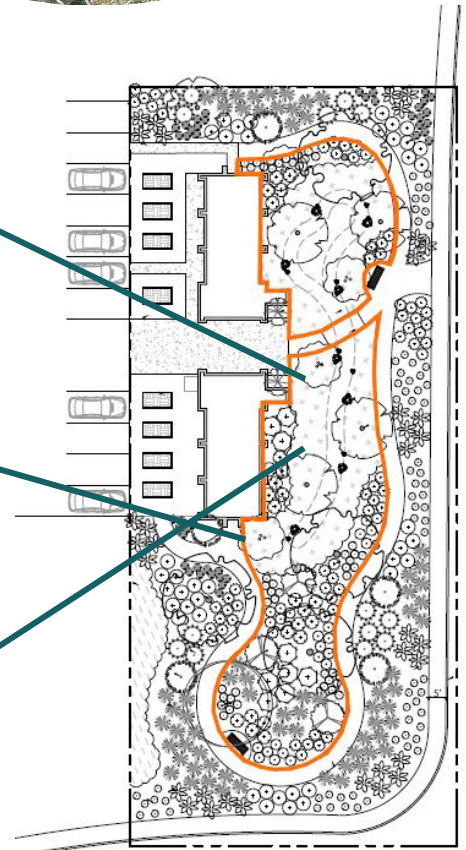
San Diego Country Estates HOA

Ramona, CA 92065

San Diego Country Estates replaced 23,289 square feet of turf grass around their Community Relations Development building and at the curbside of the Clubhouse Parking Lot with native and drought-tolerant plants. A rock-lined swale meanders through the landscape to prevent stormwater runoff. A decomposed granite walkway with a pedestrian bridge was incorporated to invite residents to enjoy the new landscape.



PRE-PROJECT PHOTO



Orange areas converted from grass to sustainable landscaping.

PROJECT OUTPUTS



Area treated:

23,289 sqft



Native plant* area installed:

7,525 sqft

PROJECT OUTCOMES



Irrigation runoff*
reduced:

137,300 gal/yr



Water saved:

1,373,000 gal/yr

Enough water to serve
12-13 San Diego households per year



Estimated participant
cost savings:

\$110,000

over ten years

***Native plant benefits:** Native plants help support working ecosystems in California. They attract butterflies, birds, and other pollinators, require little or no artificial irrigation when established, and help reduce or eliminate pesticide use.

Irrigation runoff reduction: Irrigation runoff from landscapes carries pollutants like oil, paint, pesticides, fertilizers, and pet waste into the storm drain system, and is not treated before entering local waterways.

NATIVE PLANT PROFILE

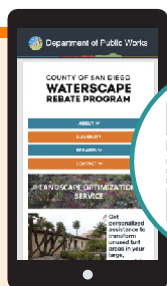


The *Cercis occidentalis* (common name: Western Redbud) is a deciduous shrub sprouting magenta flowers before its green leaves in the spring. Foliage turns yellow then red in the fall. Seed pods dangle in the winter. It is drought tolerant and attracts hummingbirds and butterflies.

“With our original budget, we probably only would have been able to strip the grass and mulch it. Now that we have the rebate money coming in, we’re able to add the drip system, the smart meter, the retention basin, the pathways, and boulders. We are maximizing our landscape and seeing the reduction of water usage.

– **NANCY ZADROZNY**

HOA Landscape Supervisor”



UPGRADE YOUR LANDSCAPE TODAY!

The [Landscape Optimization Service](#) can help your unincorporated HOA or commercial property transform large grass areas into sustainable, low water use landscapes with technical assistance from start to finish.